



The Diamond

A publication of Lambda Sigma National Sophomore Honor Society

President's Message

To say that the presidents' conference was a spectacular event, would be an understatement, for it requires only superlatives to describe it. Casey, Derek, Clint and their advisor, Kevin Cucchio, made everyone welcome, and they provided a perfect backdrop for the discussions throughout the day, and a beautiful banquet which ended the weekend.



Jane Price Harmon
National President

The national board was very impressed with the enthusiasm of the presidents', their willingness to share ideas so freely on all aspects of your chapter. It was heartening to see your commitment to Lambda Sigma. One of the highlights of the conference for me was shuttling four students back and forth from the hotel to campus. We talked and laughed, and they were extremely patient with my learning to operate the Camry. I know we looked quite funny driving in the dead of night with no lights on with the windshield wipers blazing while soap poured onto the windshield.

From your evaluations, the national board hit the mark on the program we offered, but you set the bar high for the next conference which will be at Northern Illinois University in 2011. ♦

CONGRATULATIONS – Lambda Sigma Honor Chapters

Honor chapters are selected by the national executive board for excellence and achievement. Requirements these chapters must fulfill to be considered include: completion of annual reports by the president, treasurer, and advisor; completion of all rituals in accordance with chapter and national guidelines; correspondence with board correspondents; submission of an article to at least one issue of *The Diamond*; evidence of campus and community service; minimum contribution of at least \$50.00 to the national scholarship fund; approved by-laws on file with national; and attendance at the presidents' conference.

Congratulations to the following chapters on receiving this high honor!

Zeta – Muskingham University

Lambda – Westminster College

Omicron – Northern Illinois University

Tau – University of Kansas

Psi – Central Missouri State University

Omega – Pittsburg State University

Alpha Gamma – Duquesne University

Alpha Delta – University of Southern Mississippi

Alpha Theta – Slippery Rock University

Alpha Iota – Mississippi State University

Alpha Lambda – D'Youville College

Alpha Mu – Berry College

Alpha Pi – Lawrence University

Beta Delta – Middle Tennessee State University

Beta Epsilon – Washington University

Beta Zeta – Pace University – NYC Campus

Beta Eta – Pace University – Pleasantville Campus ♦

INSIDE THIS ISSUE

National Scholarship Recipients
page 2

Installation of Beta Mu Chapter at Alvernia University
page 3

Chapter Presidents Attend Conference in Louisiana
page 4

Chapter News
page 5

Chapter Awards Announced
page 10

Lambda Sigma Society Mission Statement
page 10

Scholarship Donation Challenge
page 11

Ruth Knights Outstanding Advisor Award
page 11

Diversity Statement
page 11

Upcoming Deadlines Chapter Roster National Directory
page 12

National Scholarship Recipients

The 2010-2011 national scholarship recipients are: John Barr, **John Yocca Scholarship**, from the University of Southern Mississippi; Cameron Blegen, **Pat Watt Scholarship**, from Lawrence University; Molly Beahr, **Emily Taylor Scholarship**, from Duquesne University; Zachary Krumsick, **Thyrsa Amos Scholarship**, from Pittsburg State University; and Deidre Cwain, **National Board Scholarship**, from Northern Illinois University.

John Barr's involvement at the University of Southern Mississippi exemplifies the four pillars of Lambda Sigma – leadership, scholarship, service, and fellowship. While pursuing a major in sociology and media production he has not only been involved in campus life, but has held major leadership roles in numerous organizations. He served as president of Lambda Sigma and currently she serves as junior advisor. Other involvements on campus with leadership roles have included Student Government Association, Sigma Phi Epsilon, Inter-fraternity Council, Southern Miss Activities Council, and The Southerner Yearbook staff. As a result of his involvement on campus he has received numerous honors including the Most Outstanding Freshman Male. Barr was also selected as a Luckyday Scholar based on his commitment to community service and as a recipient of the Presidential Scholarship. He is a true scholar maintaining a 3.87 grade point average. Not only is Barr a member of the Honors College, but he has attended their nation convention in Texas. He has also studied in Washington, D.C. and New York in active learning classes. Upon graduation, Barr plans to pursue a career in the creative aspects of television production and screenwriting. Barr states, "Various television shows have had an impact upon my life with their relevance to situations affecting my life at that time. I hope to one day work with TV shows, working to impact the lives of the youth of the future."

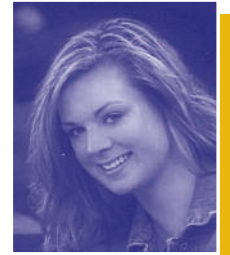


While pursuing a degree in biology with an emphasis in pre-med, **Cameron Blegen** has maintained a 3.98 grade point average. At Lawrence University he has served as co-chair of the service committee. Blegen is also a member of the men's soccer team and track team while serving as the co-chair of the Student-Athlete Advisory Committee (SAAC). He has represented the student athletes at the Midwest Conference SAAC meetings. Since working with the United Methodist Committee on Relief on the Gulf Coast after Katrina, Blegen has continued to participate in service projects. This includes Lawrence Assistance Reaching Youth, Special Olympics, Adopt-a-School Program, and mentoring an at-risk 7th grade boy. Has also has served as a

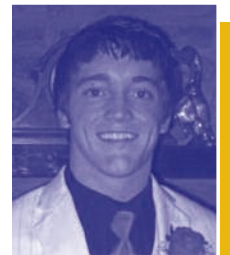


volunteer research assistant at St. Lukes Medical Center in Milwaukee and as an intern with the Milwaukee Area Health Education Center. Upon graduation Blegen plans on attending medical school in Wisconsin and then practicing family medicine and continuing his outreach in the community as a family physician.

Molly Beahr, a junior at Duquesne University, has maintained a 3.95 grade point average. She is pursuing a degree in sociology with a concentration in criminal justice and forensic humanities with a minor in political science. This past year she served the *Alpha Gamma* chapter of Lambda Sigma as president. Molly exemplifies leadership in all areas of her campus involvement whether it is in community service or just a member in an organization. Her other activities and leadership roles have included vice-president of Pre-Law Society, corresponding secretary of Alpha Gamma Delta Sorority, Phi Eta Sigma Honor Society, Golden Key International Honor Society, Mortar Board Honor Society, Sociology Club, and Alpha Kappa Delta. Beahr's career plans include obtaining a law degree to specialize in family law while serving as an advocate for children. As stated by Beahr, "For as long as I can remember, I have wanted to work as an individual that could advocate for children and I truly feel that becoming a family law and juvenile offender attorney will allow me to best achieve this goal for myself along with the children that I may serve. I feel that my pairing of sociology and political science will best prepare me for a career in family law. Sociology teaches me empathy and rehabilitation methods for offenders while political science better enables me to assert myself so that I may form the strongest argument possible while doing the most good."



Zachary Krumsick, a biology major with a pre-med emphasis, has maintained a 4.0 overall grade point average at Pittsburg State University. Krumsick served as president for the *Omega* chapter of Lambda Sigma, as well as, the Pre-med Club. Other leadership positions held include SGA Senator, and active in the presidential Emerging Leaders Program and Honors College Association. As a sophomore Krumsick received the Golden Gorilla award. This award is given to a select group of students who exemplify leadership, involvement and Pittsburg State pride. Usually this award is designated for junior and seniors, but Krumsick truly represented these qualities so was selected as a sophomore. Besides his extracurricular activities and impressive academic record, Krumsick has a passion for service. Not only has he been involved in Lambda Sigma projects and campus events such as The Big Event, but he has also gone on medical mission trips to Peru, Mexico and Belize. Knowing Spanish will be an important aspect of his life he has studied it avidly. After graduating Krumsick plans to attend a research oriented medical school to become a surgeon. His intentions are to volunteer in an



underdeveloped country with his dream one day to work with Doctors Without Borders in an effort to offer healthcare to the underprivileged.

As stated by the chapter advisor, "To be successful, a Lambda Sigma chapter needs not only strong officers and effective advisors, but also outstanding members who take the core values of the organization to heart and participate fully in the chapter's activities. **Deidre Cwian** has been one of these members for the *Omicron* chapter."



She has been involved in numerous service, social, and homecoming activities while earning the Perfect Attendance Award, as well as the Most Outstanding Member award elected by the *Omicron* members. She also served as co-chair of the social committee and served on the selection committee. As a result of her involvement in Lambda Sigma Cwian is currently serving as junior advisor. She also serves as secretary of the Equestrian team, is in the Honors Program and University Band. Cwian is one of five recipients of the Forward, Together Forward Scholarship established in memory of the five students who lost their lives on February 14, 2008. This is a very distinguished honor at NIU and it shows how valued she is on campus. After earning a bachelor's degree in health science with an emphasis in pre-physical therapy she plans to continue in the doctoral program at Northern Illinois University. Her goal is to help people overcome physical and emotional obstacles in order to live life to the fullest while working in a hospital or clinic. She also hopes to provide therapy at Veterans' medical centers. ♦

Installation of Beta Mu Chapter at Alvernia University

Dean of Student Success Claire Berardini at Alvernia University had been involved with the Lambda Sigma chapter at Pace University, New York City, when it was formed in 2005. She was eager to establish a Lambda Sigma chapter at Alvernia as service is a key component to the university's mission and core values. Also Berardini and Program Coordinator for First Year Experience Megan Adukaitis work with freshmen and wanted to be able to recognize them for their academic achievements. With the support of President Thomas F. Flynn, Vice President for University Life Joseph J. Cicala, and the faculty, Berardini began the petition process with Lambda Sigma. On January 21,

2010, Alvernia University was informed by the national president that the *Beta Mu* chapter was approved to be installed. The chartering ceremony and induction of the charter class was held on Monday, April 12, 2010. Representing the national organization was National Vice President John R. Hauser. In addition to Berardini and Adukaitis, President Flynn and Vice President Cicala, others from Alvernia University present at the ceremony were University Chaplain Kevin Queally, Associate Professor of Theology Dr. Gerald A. Vigna, and Student Success Operations Coordinator Lee Ann Bieber. Dr. Flynn was inducted as an honorary member; followed by the induction of 25 of the 28 charter members. Adukaitis and Vigna were introduced as the advisors of the chapter. ♦



Dr. Flynn accepting charter from National Vice President John R. Hauser.



Beta Mu Officers.



Charter member, advisors and guests.

Chapter Presidents Attend Conference in Louisiana

This year the Lambda Sigma presidents traveled to Ruston, LA. The Chi chapter welcomed all delegates on October 29th for a weekend of learning, sharing, and fun at the 2010 national Lambda Sigma presidents' conference.

Most delegates were met at the airport, while others drove to Ruston. After arriving at the hotel on Friday afternoon delegates were then taken to the campus. Activities began with a pizza party followed by a pumpkin and card decorating activity. These pumpkins and cards were assembled for the local Methodist Children's Home to allow the residents to enjoy the spirit of Halloween. By the end of the night friends had been made and everyone left eager to participate in the planned meetings and events that were to follow.

Saturday morning began with a light breakfast and the opening session. After Jane Harmon called the conference to order, roll call was held and chapter presidents were introduced. Chapter correspondents were then introduced and the presidents met with their board correspondent for an overview of the chapter operations. This served as an opportunity for the presidents to learn and share their thoughts and questions concerning the ritual, the national scholarship, honor chapter criteria, advisors, reports and deadlines, by-laws, *The Diamond*, and leadership issues.

The national officers then reported on responsibilities the chapters have with the respective officers. Ron Wolfe, the executive secretary, discussed the importance of completing all the reports by the deadlines and honor chapter status. Barbara Ross, *The Diamond* editor, showed copies of the newsletter and discussed the deadlines for the articles. Mark Shotwell, an administrative advisor,



Making Halloween cards for the Children's Home.

followed and talked about the available national scholarships. Next Mark Kidd, an administrative advisor, discussed chapter by-laws. John Hauser, vice-president, then explained Lambda Sigma's expansion procedures, honor cords that are available for purchase and worn by some chapter members at graduation, and Professor of the Month cups that are also available for purchase. The treasurer and convention liaison, Linda Fuerst, gave a treasurer's report. Justin Larsen, the student representative, followed with an explanation on the purpose of student representatives on the national board and encouraged the delegates to consider running for this position. Nominations for this position then followed. Finally, Larsen demonstrated the use of Facebook and Wiggio for communication among presidents. After discussion a vote was taken and Wiggio was selected as the means of communication.

Lunch was then provided and delegates had an opportunity to go on campus tour. The afternoon session began with Mark Shotwell leading discussions based on questions submitted earlier. This included successful projects, fundraising projects, attendance policies and point systems, and marketing Lambda Sigma to first year students.



Taylor Arnold and Justin Larsen serve as student representatives on the National Board.

Discussion followed, led by Mark Kidd, concerning a national service project. After much discussion "at-risk, underprivileged youth" was the common theme selected for the 2010-2011 year. Election of the student representative then followed and was announced at the closing

banquet Saturday night. Taylor Arnold from Zeta chapter at Muskingum College was elected the new student representative. She will serve a two-year term on the national board. Also announced were The Most Improved Chapter, Beta Delta chapter at Middle Tennessee University and The Most Outstanding Chapter, Alpha Delta chapter at the University of Southern Mississippi and Alpha Pi chapter at Lawrence University. Ellen Moriarty from Alpha Lambda chapter at D'Youville College was announced as the Ruth Knight Outstanding Advisor.

Sunday morning came early for most delegates as they departed for the airport to take them back to their respective chapters with many new ideas in hand. ♦



Chi Members and Advisors who made the weekend happen (left to right): Derek Newman, conference chair; Kevin Cuccia, advisor; and Casey Casio, past president.



National Officers (left to right): John Hauser, Ron Wolfe, Barbara Ross, Denise Rode, Jane Harmon, Linda Fuerst, Mark Kidd and Mark Shotwell.



Chapter News

Lambda Honor Chapter Westminster College

Greetings from the *Lambda* chapter! We have had a great semester as the forty members of the chapter look for ways they can implement the four aspirations of Lambda Sigma: service, fellowship, leadership, and scholarship.

Our chapter holds bimonthly meetings complete with fellowship activities so our members, our advisors, and our executive board can get to know each other better and build friendships with each other. The chapter is managed on a point system and at the end of the term, each member should have 60 points or they can not be considered a member of Lambda Sigma. Members earn points by attending meetings, taking part in service activities, and looking for ways they can be involved on campus.

We are all excited about the service projects we have hosted or will in the near future. For our college's homecoming the members decorated the campus by putting colorful balloons at entrances into various buildings. We scheduled visits to the community's retirement home where our members will host festive holiday parties, bake cookies, play games, and enjoy fellowship with the residents. We will be working with the area elementary school where our members will work with a class by helping them read, as well as play and learn games together.

For our fundraiser, we are providing students the opportunity to purchase a Huggie drink which they can send to other students via campus mailboxes. We expect this fundraiser to be a success and increase the morale on campus during the winter months.

We have other ideas we are hoping to implement before the fall semester comes to an end. During the spring semester our selection committee will interview members of the first year class who meet the academic standards and leadership qualities of Lambda Sigma.

We are tremendously excited to represent this year's Lambda Sigma Honor Society on Westminster's campus! We hope that all Lambda Sigma chapters have enjoyed their first semester and are ready to accept the new challenges and victories of the spring semester!

Courtney Crown
President

Omicron Honor Chapter Northern Illinois University

The *Omicron* chapter of Northern Illinois University was extremely excited to start a new year as sophomores at the beginning of fall. We started the semester by being involved with Team NIU, a volunteer organization that greets incoming students and helps them move into their residence halls. The following day we took part in two events:

Convocation and Friday Fest. At Convocation, the university's way of academically welcoming the freshman and/or transfer students, we helped usher the students to their seats and encouraged them to join in the school's fight song. After Convocation, we worked a table at Friday Fest, which is an event to disseminate information about the different organizations on campus to the students. At Friday Fest, we had many students sign up showing their interest in being part of the *Omicron* chapter.

In September we had our first chapter meeting to discuss the tentative schedule for the year, elect a chair within our committee groups, and distribute the Lambda Sigma t-shirts designed over the summer. The chapter definitely liked them because the next day everyone wore them to class! At the end of September we had our pinning ceremony and Dr.

Changnon, a professor at NIU, was our guest speaker. Following the pinning ceremony, we initiated Dr. Changnon as an honorary member of our



Pinning ceremony guest speaker – Dr. Changnon.



Pinning ceremony.



2010-2011 Executive Board.

chapter, which was as exciting for him as it was for us.

It was October before we knew it, which meant homecoming! We decided that we would participate in the banner competition and powder puff football. We also had one member run for homecoming court. Almost all the members of the chapter were involved with at least one homecoming event. Those that were not participating in homecoming events were helping our chapter by volunteering to work at the Internship Fair. The most exciting part of the Internship Fair was every hour a member is working, \$6.50 went back to the organization. It was a great way to start the year from the fundraising aspect. Another exciting part of October was that we ushered for the School of Theatre and Dance. We had two 4-day weekends that we ushered for the play, *All in the Timing*.

We have many activities planned for the rest of the first semester. We will be having a campus cleanup with a social bonfire afterwards. We will be awarding a Professor of the Month certificate to one professor each month, to show our appreciation toward the faculty of NIU. Finally, we have several fundraising ideas planned for this upcoming semester. A few ideas are selling hot chocolate for those brisk days, having a bake sale, and hosting either a rock band or basketball tournament.

As you can see, our chapter has been very busy, and will continue to be as our eyes are focused on the future. We are all constantly planning new activities and events within the service, fundraising, social, and publicity committees.

Currently, we are excited to see what new heights the *Omicron* chapter can accomplish this year.

Kristi Patenaude
Public Relations Officer

Pi **Auburn University**

Members of the *Pi* chapter of Lambda Sigma do not over look the honor of being inducted into this society as just another bullet to add to their resume. Along with being the top scholastic sophomores on campus, these students are also involved in and lead countless organizations across campus including SGA, greek life, student recruiters, marching band, cheerleaders, and women's basketball.

Over the summer, President Richard Pettey worked hard to assign every member to a committee that best fit their personality and strengths. Our bi-weekly meetings started as soon as classes did, and with these meetings came the flow of ideas as to how we were going to promote scholarship, leadership, fellowship, and service on Auburn's campus. On October 6th, members worked Hey Day, an event sponsored by SGA. Students all over campus were given name tags and encouraged to speak to someone new in an effort to maintain the Auburn tradition of being a close knit family and spread our Auburn spirit. The event was a huge success.

Future plans for *Pi* this semester include collecting cans for the Beat Bama can food drive, a Chick-fil-A biscuit fundraiser, and a fiesta social.

Rachel Glenn
Editor



Tau **Honor Chapter** **University of Kansas**

The *Tau* chapter of Lambda Sigma at the University of Kansas has been inspired by the commitment to service demonstrated by the previous members at KU. Our initiation ceremony in May was accompanied with cookies and punch to celebrate the start of a great community of students dedicated to service.

Our first service event in September was to volunteer at the For Your Ears Only audio sale to benefit KU Audio Reader. This is an organization that records volunteers reading books, magazines, and newspapers so that they are accessible to visually impaired individuals. At the benefit sale, donated stereos, speakers, vinyl records, and CD's were sold to help individuals across the state of Kansas. As Lambda Sigma members, we performed a variety of tasks ranging from organizing records to helping move tables and large speakers. This is the second year that the *Tau* chapter helped at the audio sale; hopefully it will become an annual event!

In October, we volunteered at Jubilee Café, a local organization that provides breakfast twice a week to community members in need. The café is open every Tuesday and Friday morning from 6:00-9:00 a.m. The Lambda Sigma members chose one week to serve on both Tuesday and Friday. Each morning was divided into two shifts: the first shift cooked breakfast and helped set up while the second shift served the food and helped with clean up.



This semester, we also plan to serve as volunteers for the Salvation Army during their annual Holiday Campaign. We hope that our activities this school year will be inspirational for future members of Lambda Sigma at KU as well!

Whitney Kleinmann
Historian

Chi **Louisiana Tech University**

The *Chi* chapter members have been involving themselves on campus and are motivated to participate in our community. At the beginning of the semester members were involved in preparation of the Lambda Sigma national presidents' conference held in Ruston this year. During the conference a service project was held. Members made and Halloween candy grams for the Methodist Children's home. Engaging together in service projects and fellowship allowed the presidents to get to know the members from across the country.

Also, members of Lambda Sigma participated in various events held throughout the homecoming week at Louisiana Tech. One homecoming event consisted of members showing their bulldog pride, as well as artistic ability, by painting the windows of local businesses with supportive cheer. Also, members participated in a cook-off where they entered lasagna and a peanut butter cheese cake. Other goals of our organization this year include fundraising. The first fundraiser of the year is a split the pot raffle, in which members sell tickets for a dollar and the winner of the drawing receives half of the collected money. Other future plans include participation in various services projects, hosting social events, and recruiting new members. So far, this year has been very successful for Lambda Sigma and more progress and improvement is anticipated.



Psi **Honor Chapter** **University of Central Missouri**

The *Psi* chapter began the year by welcoming to its ranks our wonderful new advisor, Alice Ruleman. Ruleman works in the James C. Kirkpatrick Library on our campus. She is proving to be an excellent advisor and the members appreciate her valuable input at meetings!

One thing that is clearly important to this year's members is being involved in their community. This means not only being involved in events on campus, but also reaching out to the entire town of Warrensburg, Missouri. The *Psi* chapter is very service project oriented, and we enjoy being able to help and interact with those in our community.

For our very first service project, we sponsored a game night for students in our university's THRIVE program. THRIVE (Transformation, Health, Responsibility, Independence, Vocation, Education) provides students with intellectual and developmental disabilities opportunities to enhance their job skills and independence enabling them to be fully functioning members of society after completing the two year program. Lambda Sigma members and THRIVE students had a fun evening playing Life, Sorry, and Connect Four, as well as enjoying snacks and each others' company.

In October, we celebrated Halloween by delivering bags of candy to the kindergarteners in Warrensburg. Members each brought a bag of candy to one of our meetings. We distributed it among baggies and decorated each bag festively.

This month, we will be having our first fundraiser. This year, as in years past, members will be raking the yards of Warrensburg's residents for donations. This has been a successful fundraiser in the past, and our members are dedicated to another success this year.

The rest of the year holds many more

service projects for the *Psi* chapter including a canned food/book drive in time for Christmas, the Polar Bear Plunge in January, and volunteering at a Special Olympics event. We also look forward to welcoming our new members in the springtime!

Brandi Sahlfeld
Secretary

Alpha Gamma **Honor Chapter** **Duquesne University**

Our chapter goal at Duquesne University is to foster leadership, scholarship, fellowship, and the spirit of service among college students. The *Alpha Gamma* chapter is excited to do just that throughout this academic school year. Our chapter meets bimonthly to discuss new service ideas and ways to get involved around the community, on and off campus. With a vast variety of service opportunities available, we know that our goals will be achieved.

One way *Alpha Gamma* has made a difference around the city of Pittsburgh is through St. Vincent de Paul, which is a Catholic organization that engages in person-to-person service for the needy. Almost every Sunday evening members of the *Alpha Gamma* chapter distribute food to the homeless with the Spiritan Fathers of the university. Members have called this experience "rewarding" and "fulfilling." As a chapter, we are eager to continue this service throughout the remaining fall months. Another service event that has members of the chapter extremely excited is the Making Strides Against Breast Cancer Walk through the American Cancer Society. Since the month of October is national Breast Cancer Awareness month, *Alpha Gamma* stands proud to have donated money, participated in the walk, as well as raise awareness for breast cancer. This was the first year that Pittsburgh held this walk and one more reason why *Alpha Gamma* was thrilled to be a part of it.

Our dedication to service never quits as

we are constantly brainstorming new service projects that interest us, as well as make an impact on those we are aiding. *Alpha Gamma* recently took a large interest in an organization called Gwen's Girls. The purpose of this organization is to provide various gender-specific support to at-risk girls who have gone through difficult life situations. Their goal is to break the cycle these girls have been living through and also improve their lives. There is a wide range for opportunities in this organization such as mentoring and tutoring programs. *Alpha Gamma* is aiming to fundraise for this organization and work with the girls on a personal level. This is something new for the chapter and we are looking forward to see how we can make a difference in their lives. *Alpha Gamma* is also promoting Global Literacy through a Lambda Sigma book drive. Another project we are having is a food drive. Lastly, *Alpha Gamma* plans to send holiday cards to troops overseas. This is a project that our chapter has done in the past and truly enjoyed. We are looking forward to ending the fall semester by supporting the men and woman who serve our country.

Even though *Alpha Gamma* is partaking and planning many different service activities, we are always striving to do more. With each meeting new ideas are brought to the table, which can provide for more opportunities. Our chapter is already discussing events for the spring semester such as Relay for Life. Thus far, *Alpha Gamma* has had a fun and productive semester. We are extremely excited about the service we have already provided and are enthusiastic about what is to come.

Gina Gebhardt
Editor



Alpha Delta Honor Chapter University of Southern Mississippi

The *Alpha Delta* chapter at Southern Miss has had a very eventful first semester. From move-in day, to presenting care packages to the freshman we have been moving non-stop. However, our service efforts never stop when it comes to the cause of our community.

We have implemented several service projects such as delivering care packages at mid-term. The packages were filled with fruit, and other snacks. We sent letters to the parents of first year students who reside on campus, and then when we receive the request back, packages are delivered and we also build our budget for the year! This "happy" will let the freshman know that they are remembered and dearly loved. We have also collected items for our local Humane Society and participated in a campus wide Halloween Carnival. We still have many service projects planned for the remainder of the year.

Our next project was to meet the freshmen before the selection process. We hosted a freshman pizza party with other honor societies to educate potential new members. While we keep in mind that we are still members, we will seek people with the ability to serve and lead, who also believe in fellowship and scholarship.

At Southern Miss we look ahead to the future, and also we remember the past. We seek to improve our service as life goes on, and never forget the ones who offer their support.

Arielle Edwards
Editor

Alpha Iota Honor Chapter Mississippi State University

The *Alpha Iota* chapter has been working hard to promote the ideals of Lambda

Sigma throughout Mississippi State University this semester. We were acquainted with each other at the first meeting through a series of ice breakers and fun activities, and from that point on, we have been striving to strengthen and grow as a chapter. Bimonthly meetings on Thursday nights have been established as a time to meet and discuss service project activities.

The main goal of *Alpha Iota* is to serve the Mississippi State University campus and the surrounding community of Starkville, MS. There are many organizations that we work with in order to achieve this goal. This semester, members volunteered at the Oktibbeha County Animal Shelter by feeding, bathing, and walking the animals that live there. We also helped at Emerson Family School, a school that provides education for young children as well as classes for adults. Of course, we continued to volunteer regularly at a few of the local nursing homes. Members always enjoyed playing bingo and visiting with the residents. We volunteered at Rolling Hills, a school for the mentally disabled. *Alpha Iota* also organized and ran a game booth at the campus-wide Halloween festival.

In the past, *Alpha Iota* has sold Krispy Kreme doughnuts as a fundraiser. We continued to carry on the tradition this year, and it was a great success. Doughnuts were presold by members, and there was also a booth set up on campus for students to buy them between classes. The convenience of this fundraiser made it very profitable.

We have had a very fun and successful fall semester, and we are looking forward to participating in even more service projects during the spring. We will also be recruiting members for the next school year, and we know we will find new members as dedicated to serving our community as we are!

Haley Wheeler
Editor



Alpha Sigma Gannon University

Hello from Gannon University! The *Alpha Sigma* chapter has been hard at work getting ready for the year ahead of us. The executive board has decided to make this the most productive year yet for our members. In our semimonthly meetings we split into service, social, and fundraising committees to brainstorm activities. This gave all of our members a chance to be involved in the decision making process and helped raise more excitement for each event.

We started our semester volunteering with over 1,000 other students in Gannon's annual GIVE Day. Nine members of Lambda Sigma went to St. Patrick's Church just a few blocks from campus to help clean and organize their food bank. Afterwards we were treated to a tour of the awe inspiring sanctuary. A few of our members also spent time volunteering at local flu shot clinics by recording information of participants. The service committee has many other opportunities planned including making blankets for the area hospitals and nursing homes.

Alpha Sigma is also reaching out to other honor societies on campus in the hope of co-joining in some events. Our social committee is very excited about inviting members of the freshman honor society, Phi Eta Sigma, to an ice cream social. We are also planning various service opportunities around Gannon and Erie with Phi Eta Sigma.

In an effort to be more visible on campus the members of the executive board designed T-shirts and sweatpants for members to wear. This also served as a fundraiser for our chapter. Our president, Nathalie Thorpe, also sat at a table during the annual Activities Fair to welcome freshmen to Gannon and introduce them to Lambda Sigma. Many people showed interest in our society and we hope that this will help us be remembered when we send out membership invitations next semester.

We are very excited for this to be a year

of growth and improvement for *Alpha Sigma*. All of our members wish luck to other Lambda Sigma chapters in their endeavors for the year!

**Sarah Lewis
Secretary**

Alpha Tau University of Alabama

The new Lambda Sigma members of the *Alpha Tau* chapter have hit the ground running this semester. With so many rewarding service opportunities in the Tuscaloosa community, and with such enthusiastic members, the year holds a promise to maintain our focus on making community service a habitual and enjoyable activity.

We began the year with a trip to the University of Alabama Arboretum, which provides hiking trails, environmental educational programs and tours, and other nature-related activities to the community at large. There we replanted plants, cleaned up trails, and helped construct identification signs, all while enjoying the beautiful Alabama fall weather.

We have received several opportunities for close personal interaction with community members this semester. Each of our members will spend a few hours at the Boys and Girls Club, where we will help with homework, play, and talk with some great kids. Through Project Blessings, an organization that renovates the homes of the underprivileged in the Tuscaloosa community, we will paint, clean, and landscape the home of a very appreciative member of the Tuscaloosa community.

We are currently gearing up for Beat Auburn Beat Hunger, an annual competition in which the Auburn and Alabama campuses compete to collect the most cans of food to donate to the West Alabama Food Bank. We went trick-or-treating for cans in Tuscaloosa neighborhoods, and received many gracious donations.

The *Alpha Tau* chapter is focused on each member becoming active both on the UA campus and in the Tuscaloosa community. We have received many incredible experiences thus far, and are excited for the opportunities that await us.

**Caroline Murray
Public Relations Chair**

Beta Delta Middle Tennessee State University

This has been a banner year thus far for the *Beta Delta* chapter of Lambda Sigma at Middle Tennessee State University. Our membership has swelled to 46, making us the largest group in our chapter's history. We have been working hard to uphold the pillars of leadership, scholarship, fellowship and service.

This month, our homecoming committee participated in a number of homecoming activities to support MTSU spirit (Go Raiders!), including our school's annual Chili Cook-off. We were hard at work, finding the perfect chili recipe to represent the *Beta Delta* chapter in this time-honored tradition. All of the proceeds collected at this event will be donated to Habitat for Humanity. The committee participated in the time-honored tradition of creating a homecoming banner to represent *Beta Delta's* school spirit, as well as to promote awareness of our group as a valuable asset to Middle Tennessee's academic and philanthropic efforts.

We are pleased and excited to be working closely this year with Up Til Dawn, a student-run fundraising organization that works to raise money for St. Jude Children's Research Hospital. We held a bake sale in November to raise money for St. Jude. Each of us assisted by making lots of baked goodies for the sale. Also, we will be participating in their annual Lick-A-Thon in January. For this event, we will each prepare 35 envelopes with the addresses of friends and family members, so that Up Til Dawn

may send them information on how they can get involved and support the children at St. Jude.

With each meeting, we are coming up with more and more new and exciting ways to serve our community. We are tentatively discussing a number of possible projects for December, including providing Christmas gifts for underprivileged children through the Angel Tree program. We are also considering the possibility of putting on a Christmas skit for children, as well as making Christmas cards to send to a variety of outlets, such those on active duty in Afghanistan and Iraq.

This academic year promises to be a fun and productive time for *Beta Delta*, filled with many opportunities for growth – in academics, as leaders, and as philanthropists. We are so excited to see what the year has in store for us, and we cannot wait to tackle each new project with pride and enthusiasm.

Kelsey Rogers
Editor



LAMBDA SIGMA SOCIETY MISSION STATEMENT

Lambda Sigma Society, a national honor society for second year students, is dedicated to the purpose of fostering leadership, scholarship, fellowship and service among its members as they promote the interests of the colleges and universities they represent. ♦

Chapter Awards Announced

Most Outstanding Chapter Awards and the Most Improved Chapter Award were announced at the closing banquet at the presidents' conference. These awards were for the 2009-2010 year. The **Most Outstanding Chapter Award** was presented to two chapters, **Alpha Delta** at the University of Southern Mississippi and **Alpha Pi** at Lawrence University. The **Most Improved Chapter Award** went to **Beta Delta** at Middle Tennessee State University.

The **Alpha Delta** chapter has consistently been an honor chapter with high visibility on campus and involvement in numerous service opportunities both on campus and in the community. As a result the *Alpha Delta* chapter of Lambda Sigma continues each year to be highly regarded as one of the most prestigious and active honor societies on the Southern Miss campus. Scholarship, leadership, fellowship, and service have always been important objectives as the chapter plans their activities and projects for the year as well as selects their new members. This past year service projects in the community ranged from working with the elderly at a retirement community, to working with youth in a mentoring program at a local school, to participating in the city-wide, The Big Event. Some of the on-campus projects included Freshmen Care Package delivery, Professor of the Month, a Pizza Party for freshmen sponsored by the three honor societies selecting freshmen in the spring, and a fundraiser for Habitat for Humanity, "John Barr in a Dress," that raised money for a house being built for a Southern Miss employee. The executive board was very active in the chapter events which kept other members motivated to remain active throughout the year. To promote fellowship the "Big Lamb, Little Lamb" program was implemented creating a deeper connection to Lambda Sigma for both the current and new members. Fellowship played a key role in bringing the chapter together to be successful in their activities and events through out the year.

Alpha Pi was also recognized as the Most Outstanding Chapter. They too have consistently received honor chapter status. *Alpha Pi* began their year with a retreat which allowed the chapter to become a very close-knit group of friends that extended throughout the year ending with a celebratory picnic. A mission statement developed by the members guided them throughout the year – "We will be spirited in creating our identity by: having fun together; finding a balance in our lives and the life of our chapter; making a difference for ourselves and others; and supporting each other in our endeavors." The chapter stayed true to this mission statement as indicated by the high attendance at meetings and events through out the year. Numerous service projects were completed including the building of a shack on campus as part of an annual Shack-a-thon event to raise awareness for the homeless in the Appleton area. Members actually slept in the shack overnight! While some of the projects were collaborated with other campus organizations others were initiated by *Alpha Pi* based on the interest and talents of the members. At the end of the year over 1,525 hours of service were completed by the members of *Alpha Pi*! Through the course of the year they also supported each other through the "Lamb of the Week" program for extraordinary academic, service, leadership and personal achievements.

During the 2009-2010 the **Beta Delta** chapter members at Middle Tennessee State University knew they had a challenge before them as they began the year with only 16 members. This did not stop them as they began the year highly motivated and dedicated to making their year successful. Through these efforts and the many projects on and off campus they became very visible on campus as a student organization able to compete with any other group on campus. This was evident by *Beta Delta* placing second in the Rockin' Raider Chili Cook-off, which included many larger student organizations. As a small team, the Chili-Cook off was an amazing opportunity for Lambda Sigma to show the students of Middle Tennessee that they could still accomplish big things. Some of the events through out the year included two bake sales to raise money St. Jude Children's hospital and participation in the campus-wide service project, The Big Event, allowing members to help beautify the Murfreesboro area. This allowed the members to show

their gratitude to the local community for constantly supporting them in their endeavors toward positive growth. In order to assure this growth, during spring semester they focused on expanding their social network to acquire new members. One way this was accomplished was by spending time at the Honors College recruiting hard-working students to carry on the efforts of Lambda Sigma. Their hard efforts paid off as this year the chapter has increased its membership to 46 members! Middle Tennessee's *Beta Delta* chapter of Lambda Sigma will continue to strive for excellence while making a difference on campus, in the community, and in the life of its students. ♦

Lambda Sigma Brochures Available

Brochures are available by contacting Barbara.ross@usm.edu. Please indicate how many are needed. Many chapters use these brochures to recruit prospective members, inform faculty and administrators about the honor society, and generate interest in starting chapters on nearby campuses. ♦

Honor Cords Available

Many chapters are now providing honor cords for their graduating seniors to be worn at graduation. If you are interested in ordering these blue and gold cords, you may do so by contacting the following company: Schoen Trimming and Cord Co. Inc., 151 West 25th St., New York, NY 10001, or contacting them at 212-255-3949. ♦

Professor of the Month Mugs Available

Blue Ceramic mugs with the greek letters Lambda Sigma and "Excellence in Teaching" all in gold letters are available for \$5 each. Contact John Hauser, national vice president, to place your order. His contact information is listed on the last page of this newsletter. ♦

Scholarship Donation Challenge

Listed below are the chapters who donated to the scholarship fund last year. These chapters challenge all other chapters to make contributions during the 2010-2011 school year. Congratulations to these chapters!

\$250 ♦ Diamond Level
Rho

\$150 - \$249 ♦ Gold Level
Alpha Delta ♦ Alpha Zeta ♦ Beta Eta

\$100 - \$149 ♦ Blue Level
Epsilon ♦ Zeta ♦ Omicron ♦ Alpha Theta
Alpha Kappa ♦ Alpha Lambda ♦ Alpha Pi ♦

Ruth Knights Outstanding Advisor Award

The Ruth Knight Outstanding Advisor Award was presented to Mary Ellen Moriarty from *Alpha Lambda* chapter at D'Youville College. Her chapter president, Anthony Amabilell accepted it on behalf of Moriarty at the presidents' conference this past October. Moriarty currently serves as the adult academic support specialist/reading-writing specialist in the Student Support Services-Learning Center at D'Youville College. Moriarty earned a B.A. degree in elementary education from D'Youville College before pursuing a M.Ed. in elementary education from State University of New York at Buffalo. Her final degree in educational leadership, an Ed D., was received from D'Youville College. Professionally, Moriarty is affiliated with the New York State College Learning Skills Association and Delta Sigma Honor Society. She served on the national board of Lambda Sigma as an administrative advisor for five year from 2004 until 2009. Moriarty has advised the *Alpha Lambda* chapter of Lambda Sigma since 1997. During this time the chapter has consistently received honor chapter status. ♦



I knew when I started teaching students at the college level classes that I found my niche.
– Mary Ellen Moriarty

Diversity Statement

Inherent in the purposes and ideals of Lambda Sigma Society is the understanding of the importance of diversity within the organization in achieving its goals. To this end, the National Executive Board of Lambda Sigma Society encourages its member chapters to actively pursue candidates for membership who would broaden and strengthen the local chapters by providing diverse backgrounds. This diversity within the organization should serve to enhance the potential for leadership and service by acknowledging the wide range of students within the college or university and their potential to contribute to the goals of the society. ♦

Upcoming Deadlines

JANUARY 31, 2011

Report on Rituals.....Neal Edman
Diamond Article.....Barbara Ross
Mid-Year Status Report.....Ron Wolfe

MAY 1, 2011

Scholarship Application.....Mark Shotwell

JUNE 1, 2011

President's Report.....Ron Wolfe

Treasurer's Report

Advisor's Report

Initiate List

National Dues (\$40/member)

Convention Assessment (\$300)

Scholarship Donation (Minimum Donation \$50 for Honor Chapter Status)

All reports and *The Diamond* article are to be submitted electronically. Reports are located on the website. ♦

Lambda Sigma Chapter Roster

<i>Alpha</i>	University of Pittsburgh	Pittsburgh, PA
<i>Beta</i>	Miami University	Oxford, OH
<i>Epsilon</i>	Allegheny College	Meadville, PA
<i>Zeta</i>	Muskingum College	New Concord, OH
<i>Eta</i>	Carnegie Mellon University	Pittsburgh, PA
<i>Iota</i>	University of Mississippi	University, MS
<i>Lambda</i>	Westminster College	New Wilmington, PA
<i>Omicron</i>	Northern Illinois University	DeKalb, IL
<i>Pi</i>	Auburn University	Auburn University, AL
<i>Rho</i>	Thiel College	Greenville, PA
<i>Tau</i>	University of Kansas	Lawrence, KS
<i>Chi</i>	Louisiana Tech University	Ruston, LA
<i>Psi</i>	Central Missouri State University	Warrensburg, MO
<i>Omega</i>	Pittsburg State University	Pittsburg, KS
<i>Alpha Gamma</i>	Duquesne University	Pittsburgh, PA
<i>Alpha Delta</i>	University of Southern Mississippi	Hattiesburg, MS
<i>Alpha Epsilon</i>	Mansfield University	Mansfield, PA
<i>Alpha Zeta</i>	Texas A & M University	College Station, TX
<i>Alpha Eta</i>	Penn State Erie – The Behrend College	Erie, PA
<i>Alpha Theta</i>	Slippery Rock University	Slippery Rock, PA
<i>Alpha Iota</i>	Mississippi State University	Mississippi State, MS
<i>Alpha Kappa</i>	Georgia Institute of Technology	Atlanta, GA
<i>Alpha Lambda</i>	D'Youville College	Buffalo, NY
<i>Alpha Mu</i>	Berry College	Mt. Berry, GA
<i>Alpha Pi</i>	Lawrence University	Appleton, WI
<i>Alpha Sigma</i>	Gannon University	Erie, PA
<i>Alpha Tau</i>	University of Alabama	Tuscaloosa, AL
<i>Alpha Phi</i>	Ferrum College	Ferrum, VA
<i>Alpha Psi</i>	University of Toledo	Toledo, OH
<i>Alpha Omega</i>	Westfield State College	Westfield, MA
<i>Beta Gamma</i>	Pikeville College	Pikeville, KY
<i>Beta Delta</i>	Middle Tennessee State University	Murfreesboro, TN
<i>Beta Epsilon</i>	Washington University	St. Louis, MO
<i>Beta Zeta</i>	Pace University – NYC Campus	New York, NY
<i>Beta Eta</i>	Pace University – Pleasantville	Pleasantville, NY
<i>Beta Theta</i>	Urbana University	Urbana, OH
<i>Beta Kappa</i>	George Mason University	Fairfax, VA
<i>Beta Lambda</i>	University of North Carolina – Pembroke	Pembroke, NC
<i>Beta Mu</i>	Alvernia University	Reading, PA

National Address Directory

NATIONAL PRESIDENT

Jane Price Harmon
 126 Seventeenth Street
 Atlanta, GA 30309
 (404) 892-2491 – home
 (678) 772-8094 – cell
 harmon.jane@paideiaschool.org
 Corresponding Chapters: *Beta, Iota, Alpha Zeta, Alpha Mu, Alpha Iota, Alpha Sigma*

VICE PRESIDENT

John Hauser
 58 Eagle St.
 Greenville, PA 16125
 (724) 588-2474 – home
 (724) 456-4066 – cell
 jhauser@thiel.edu
 Corresponding Chapters: *Chi, Alpha Delta, Alpha Pi, Alpha Omega, Beta Gamma, Beta Zeta*

RECORDING SECRETARY

Denise Rode
 Northern Illinois University
 Orientation & First Year Experience
 023 Holmes Student Center
 DeKalb, IL 60115
 (815) 753-6781 – office
 (815) 751-8256 – cell
 (815) 753-7480 – fax
 drode@niu.edu
 Corresponding Chapters: *Tau, Alpha Epsilon, Beta Lambda, Beta Mu*

EXECUTIVE SECRETARY

Ron G. Wolfe
 108 Westside Dr.
 Richmond, KY 40475
 (859) 623-5088 – home
 Ex_sec@yahoo.com
 Corresponding Chapter: *Beta Delta*

TREASURER / CONVENTION LIAISON

Linda Fuerst
 Lawrence University
 Alumni Volunteer Coordinator
 711 E. Boldt Way SPC 17
 Appleton, WI 54911
 linda.m.fuerst@lawrence.edu
 (920) 832-6853 – office
 (920) 731-8937 – home
 (920) 475-8067 – cell
 (920) 832-6896 – fax
 Corresponding Chapters: *Lambda, Pi, Omega, Alpha Eta, Alpha Phi, Alpha Psi, Beta Theta*

EDITOR

Barbara Ross
 118 College Dr. # 5067
 Hattiesburg, MS 39406-0001
 (601) 266-4397 – office
 (601) 297-5947 – cell
 (601) 266-5870 – fax
 Barbara.Ross@usm.edu

ADVISORS

Mark Shotwell – Scholarships
 Slippery Rock University
 Department of Biology
 Slippery Rock, PA 16057-1326
 mark.shotwell@sru.edu
 (724) 738-2476 – office
 (724) 421-8012 – home
 (724) 372-3082 – cell
 (724) 738-4782 – fax
 Corresponding Chapter: *Zeta, Eta, Omicron, Alpha Gamma, Beta Epsilon, Beta Kappa*

Neal Edman – Rituals

Vice President and Dean of Student Affairs
 Westminster College
 Market Street
 New Wilmington, PA 16172
 (724) 946-7110 – office
 (724) 946-6140 – fax
 nedman@westminster.edu
 Corresponding Chapters: *Alpha, Rho, Alpha Theta, Alpha Lambda, Alpha Tau*

Mark Kidd – By-laws

Dean of Students
 NVCC – Manassas Campus
 6901 Sudley Road
 Manassas, VA
 (703) 257-6661 – office
 (703) 530-8244 – fax
 mkidd@nvcc.edu
 Corresponding Chapters: *Epsilon, Psi, Alpha Kappa, Beta Eta*

STUDENT REPRESENTATIVES

Taylor Arnold
 163 Stormont Street
 New Concord, OH 43762
 (740) 502-7002
 tarnold@muskingham.edu

Justin Larsen
 845 Regent Drive, Unit M
 DeKalb, IL 60115
 jlarsen@niu.edu



Website:
<http://www.lambdasigma.org>

Distribution Lists:
 LSPresidents@yahooogroups.com
 LSAadvisors@yahooogroups.com